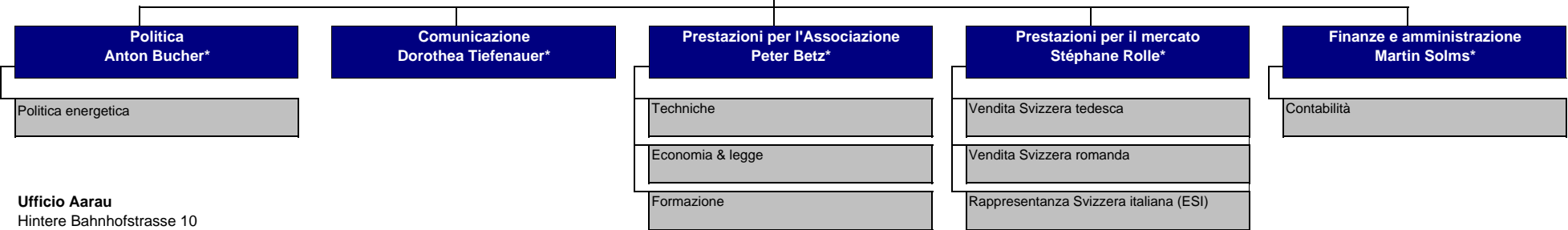




AES
Josef A. Dürr*

Assistente



Ufficio Aarau
Hintere Bahnhofstrasse 10
Postfach
5001 Aarau
Tel. +41 (0)62 825 25 25
Fax +41 (0)62 825 25 26
E-mail: info@strom.ch

Ufficio Lausanne
av. Ruchonnet 2
Case postale 534
1001 Lausanne
Tel. +41 (0)21 310 30 30
Fax +41 (0)21 310 30 40
E-mail: info@electricite.ch

E-mail:
nome.cognome@strom.ch
nome.cognome@electricite.ch

*Membro della
direzione
01/2010